



Joint Planning Advisory Board Update

June 2023



Department
for Transport

Integrated Rail Plan for the North and Midlands



Overview

- EMDevCo – background introduction
 - Origins – HS2 Growth Strategy, 2017
 - Midlands Engine
 - Establishment of EMDevCo as interim vehicle
 - Levelling Up & Regeneration Bill
 - Key commissions – Areli Developments
 - Design Code Pathfinder
 - Key themes around Net Zero, Natural Capital (Green & Blue)

- HS2 Growth Strategy Review



JOINED UP APPROACH, CONFIDENCE & CREDIBILITY, SUPPORTING...

_BELFAST
_BIRMINGHAM
_BRISTOL
_CARDIFF
_GLASGOW
_LEEDS
_LIVERPOOL
_MANCHESTER
_NEWCASTLE
_NOTTINGHAM
_SHEFFIELD



Why Core Cities?
22 million already contribute more than a quarter of the UK's economic output, with more business and innovation.



Agenda





CREATION OF INVESTMENT ZONES

Generous, targeted & time limited tax cuts for businesses

Liberalised planning rules to release more land for housing & commercial development

Reforms to increase the speed of delivering development



 HM Treasury

HS2   **national highways** **LCR**  **HM Railways**



HS2 Growth Strategy Review



- Review the original East Midlands Growth Strategy published Sept 2017
- Programme intended in two tranches over two years – DfT support
- Growth & infrastructure – **what HS2 means for the region set in context**
- i.e. the short medium term picture as well as longer term – post 2040's
- Co-ordination of key workstreams, point of contact and engagement
- Secretariat to the supporting working groups including:
 - Directors Group – MD of DevCo
 - Commissioning Group – PD of DevCo
 - Transport Working Group – DD of DevCo
 - Station Integration teams – working as joint client with Local Authority leads (in Derby working alongside LCR).





Key Workstreams

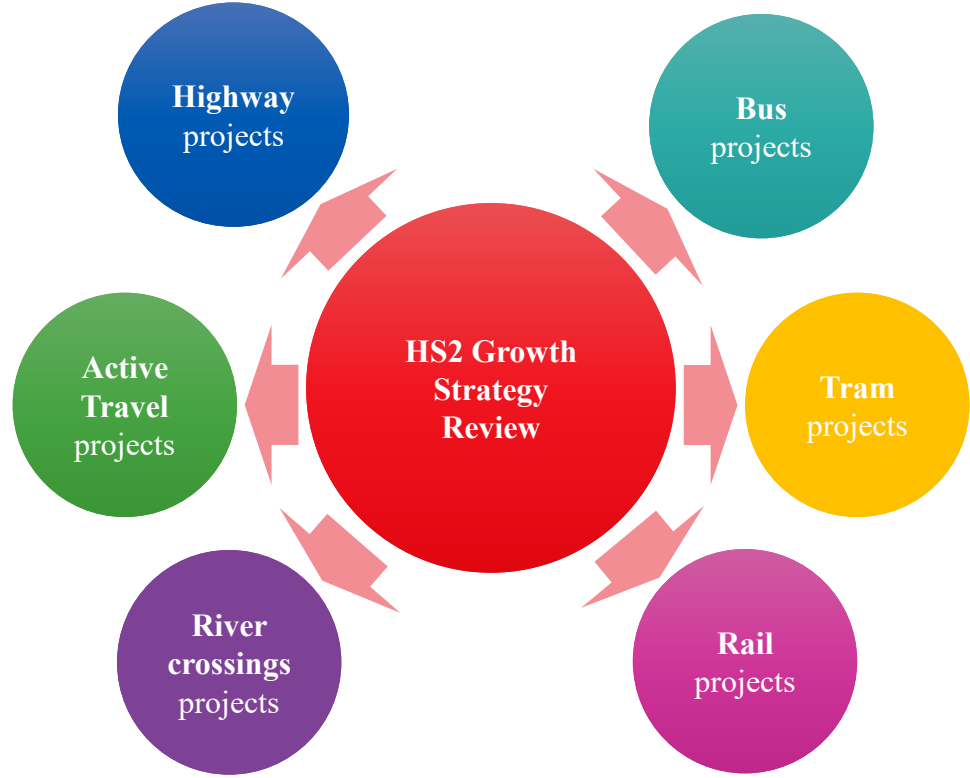
- **Economics and Business Case Development** - Technical evidence base
- **Transport Planning & Traffic Modelling** – Key Infrastructure moves and refresh of East Midlands Gateway multi-modal model
- **Station Integration Planning** - Capacity for Growth & infrastructure moves for stations
- **Programme Management** - Co-ordination & formulation of the Strategy

Economic Analysis & Business Case

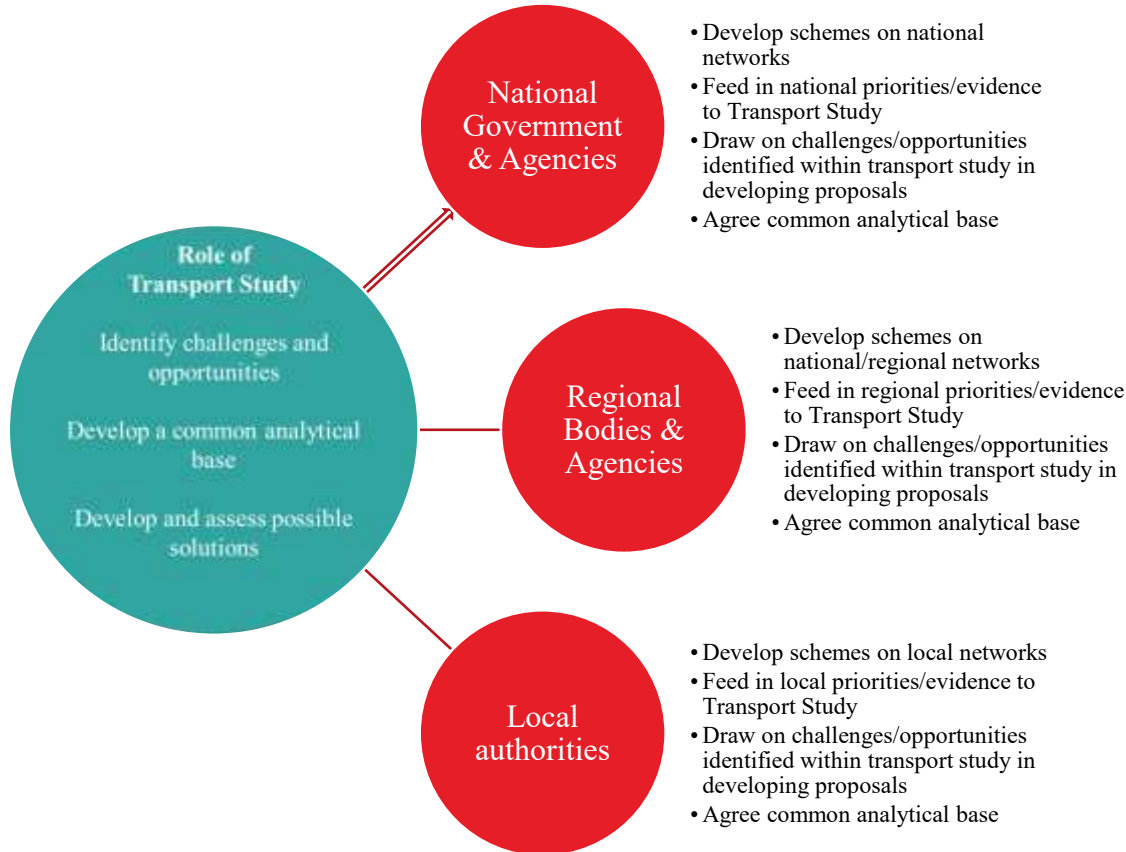
- **HMT compliant programme level business case** will have five cases i.e. strategic case; economic case; financial case; commercial case; and management case.
- **Key inputs:**
 - Data gathering and analysis plus data from other workstreams
 - Economic analysis will support planning & modelling.
 - Planning and modelling will inform the economic appraisal for the business case
 - **New and existing projects** will be identified and developed in both workstreams.
 - **Development** related projects (housing, employment land and regeneration) and major **infrastructure** including key transport schemes

Transport Planning & Modelling

Project spin-offs



Scope and relationships



Update – Transport Planning & Modelling

- Sharing of information between agencies and local authorities
- A common **baseline conditions report in development** to inform the draft strategy
- Paving the way for a refresh of the **East Midlands Gateway multi-modal model** with Systra and LA partners
- includes conversations relating to **alignment with the Greater Nottingham Strategic Plan** (Core Strategy)
- Initial paving conversations with **National Highways**
- Engagement in the **station integration workshops** to look at station access strategies.

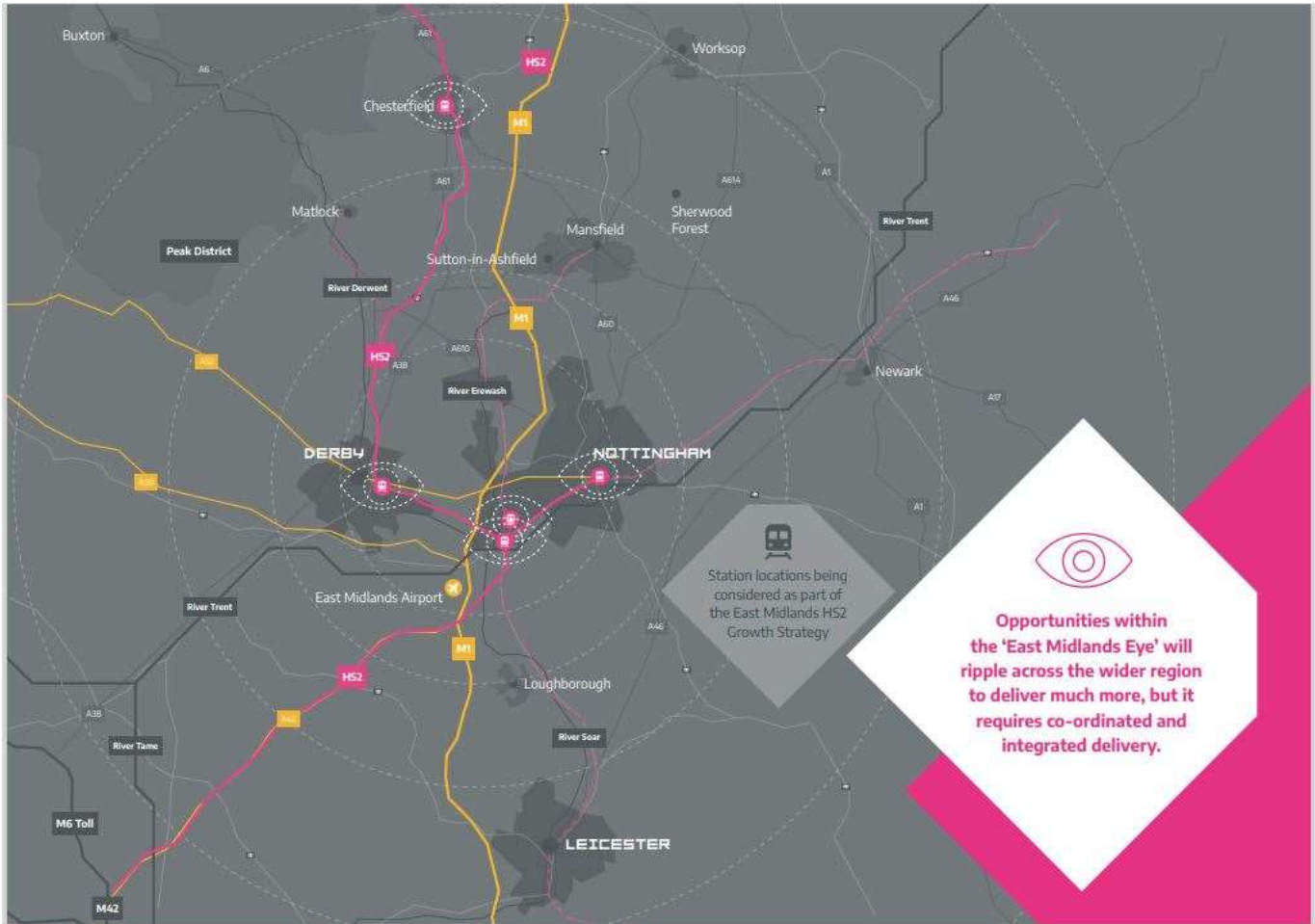


ARELI
DEVELOPMENTS



Station Integration
Initial Site Visits





Opportunities within the 'East Midlands Eye' will ripple across the wider region to deliver much more, but it requires co-ordinated and integrated delivery.

Level 1 – Block Massing



Example Outputs – for illustrative purposes only

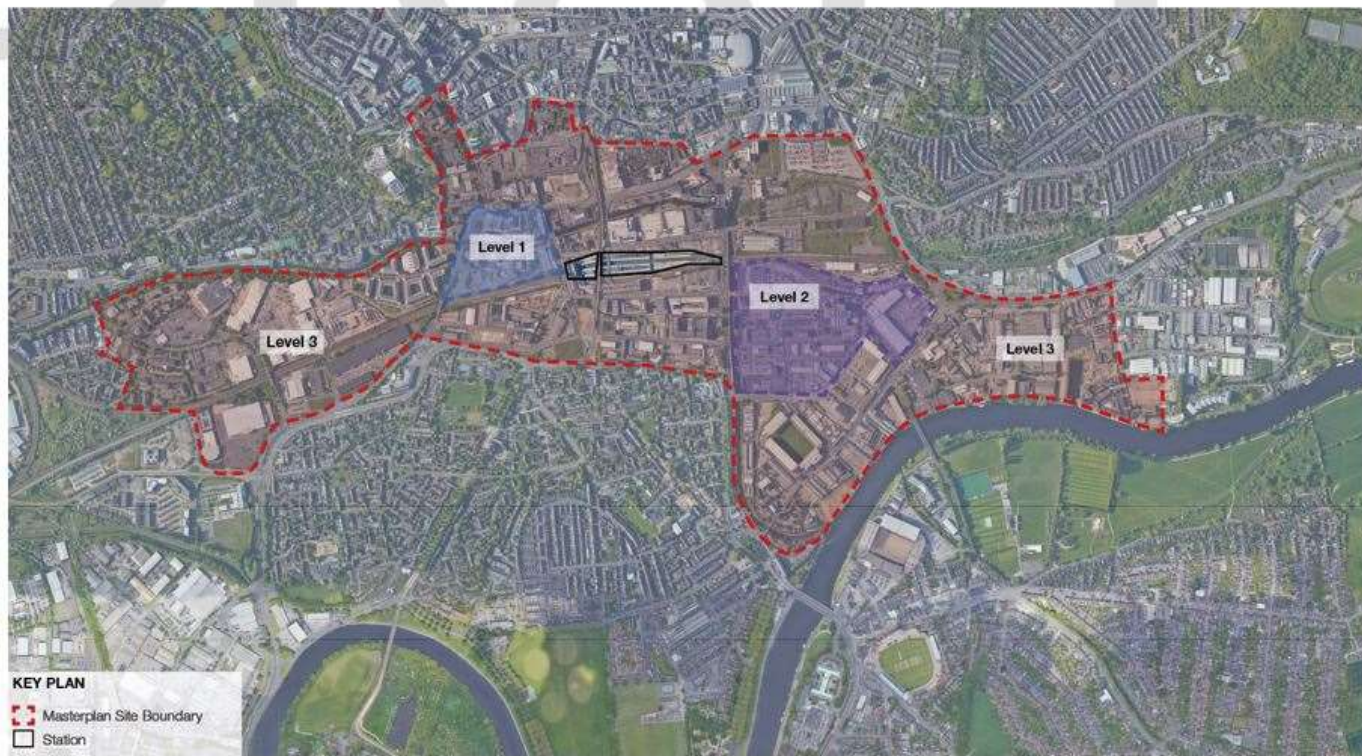
Level 1 – Block Massing



Level 2 – Sugar Cube Masterplan



Nottingham



Nottingham Station Masterplan Study Area

Derby

Collaboration
with LCR



Derby Station Masterplan Area

Chesterfield



Staveley Corridor Masterplan Area



Chesterfield Station Masterplan Area

Update – Station Integration

- Scopes of works agreed with each local authority team
- Work now commenced to assess growth and framework masterplanning
- Aligned with **local station access strategies** working with Arup/Systra
- Areli team (with Benoy architects) undertaking initial assessments
- **Initial workshop series underway** – with local teams including the Paul and the team in Nottingham.
- Regular working sessions with the consultant team and station client teams
- Outputs will emerge for inclusion in draft reports.

Summary – Key Points

- **Collaborative engagement** underway with local, regional and national partners
- Focused on creating a **comprehensive and integrated investment picture**
- **Short, medium & long term** i.e. between now and HS2's arrival
- A considered and phased approach to delivering **growth and infrastructure**
- Providing confidence to investors and a **foundation for project bids**
- Creating a strategy that will help to **reinforce IRP and HS2** investments
- **Draft reports late summer** – completion of tranche 1.