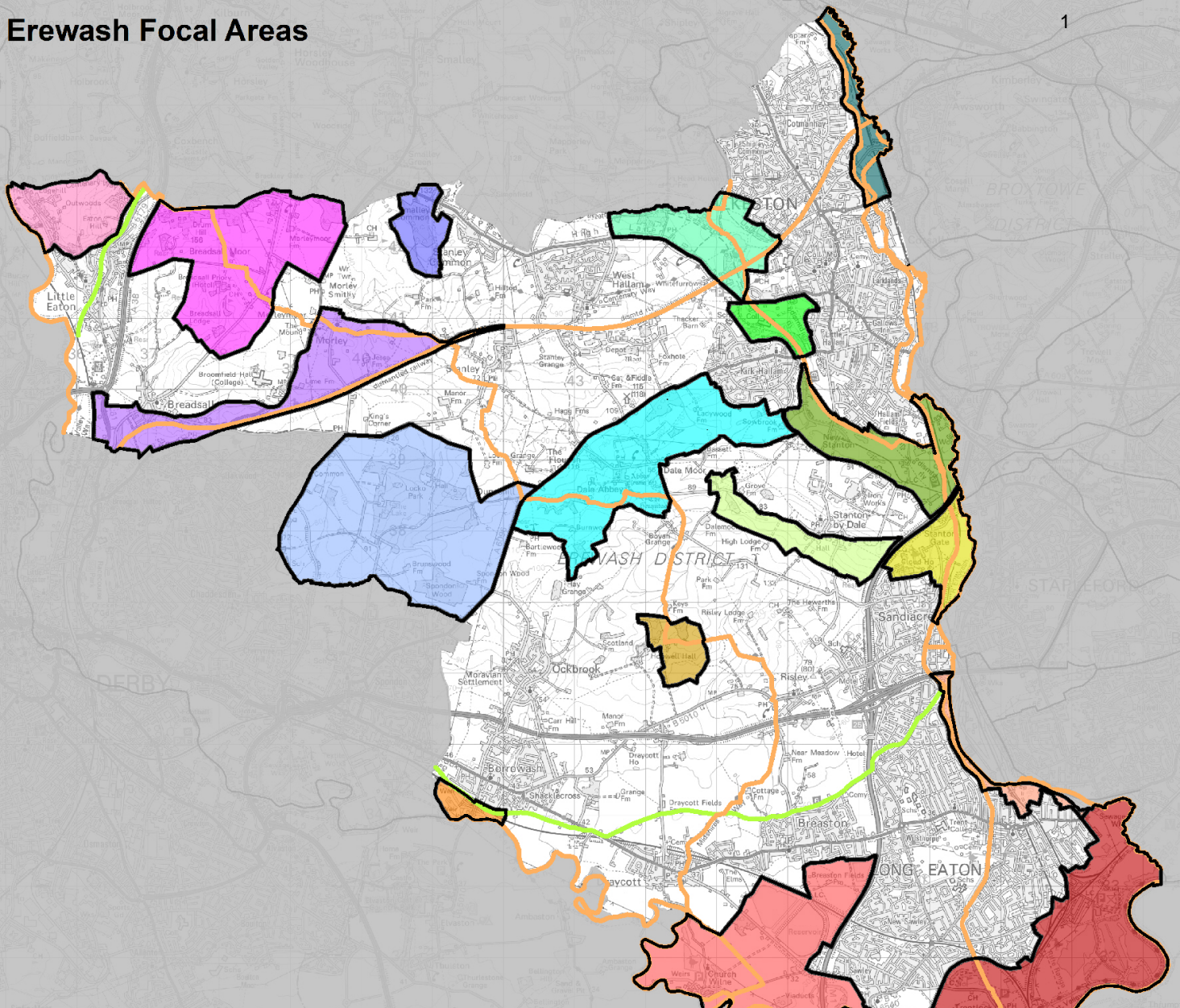


Erewash's Focal Area Map Book

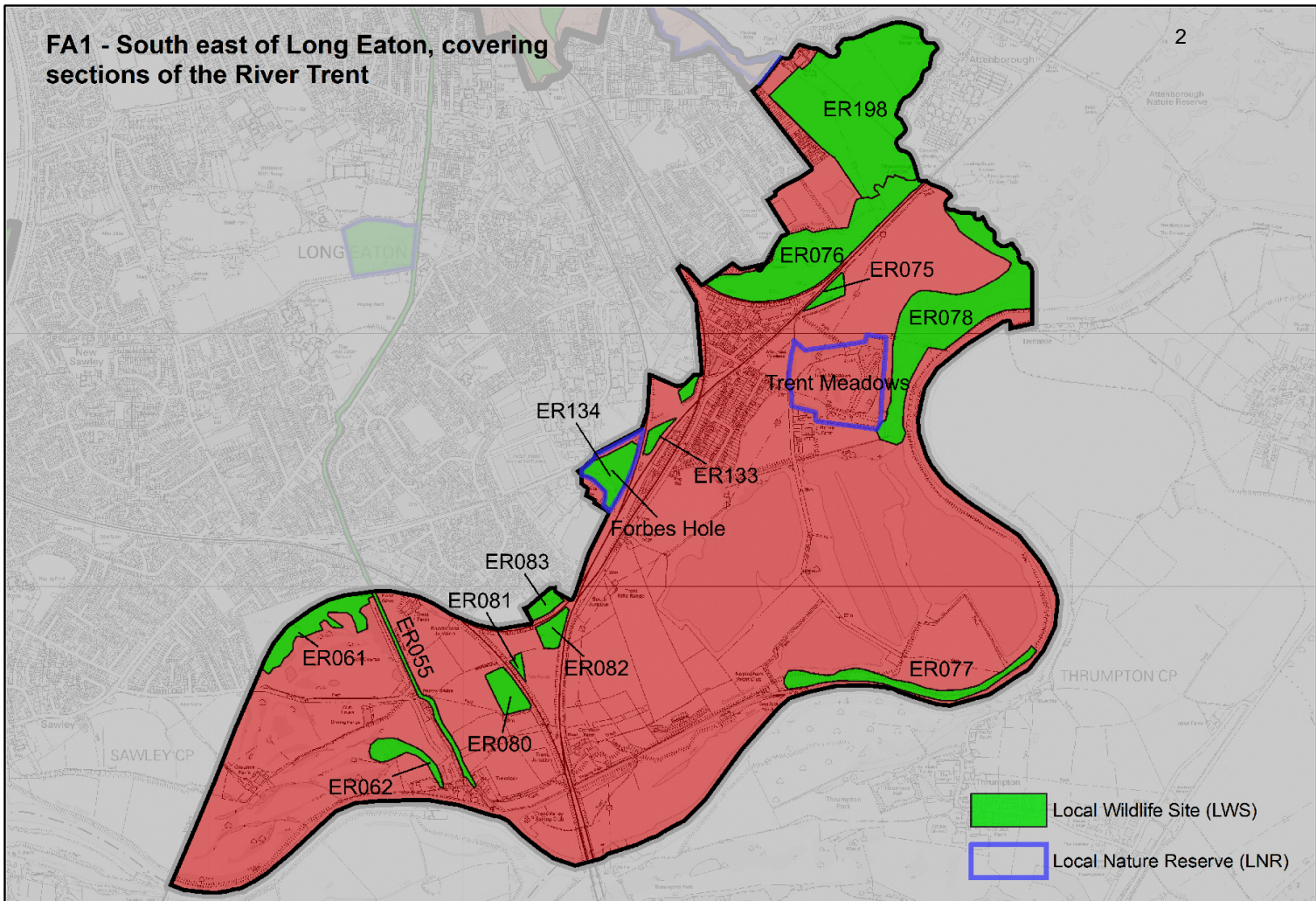
Accompanying document to the Nottingham Housing Market Area Blue-Green Infrastructure Strategy and Erewash's Focal Area Assessments

Erewash Focal Areas

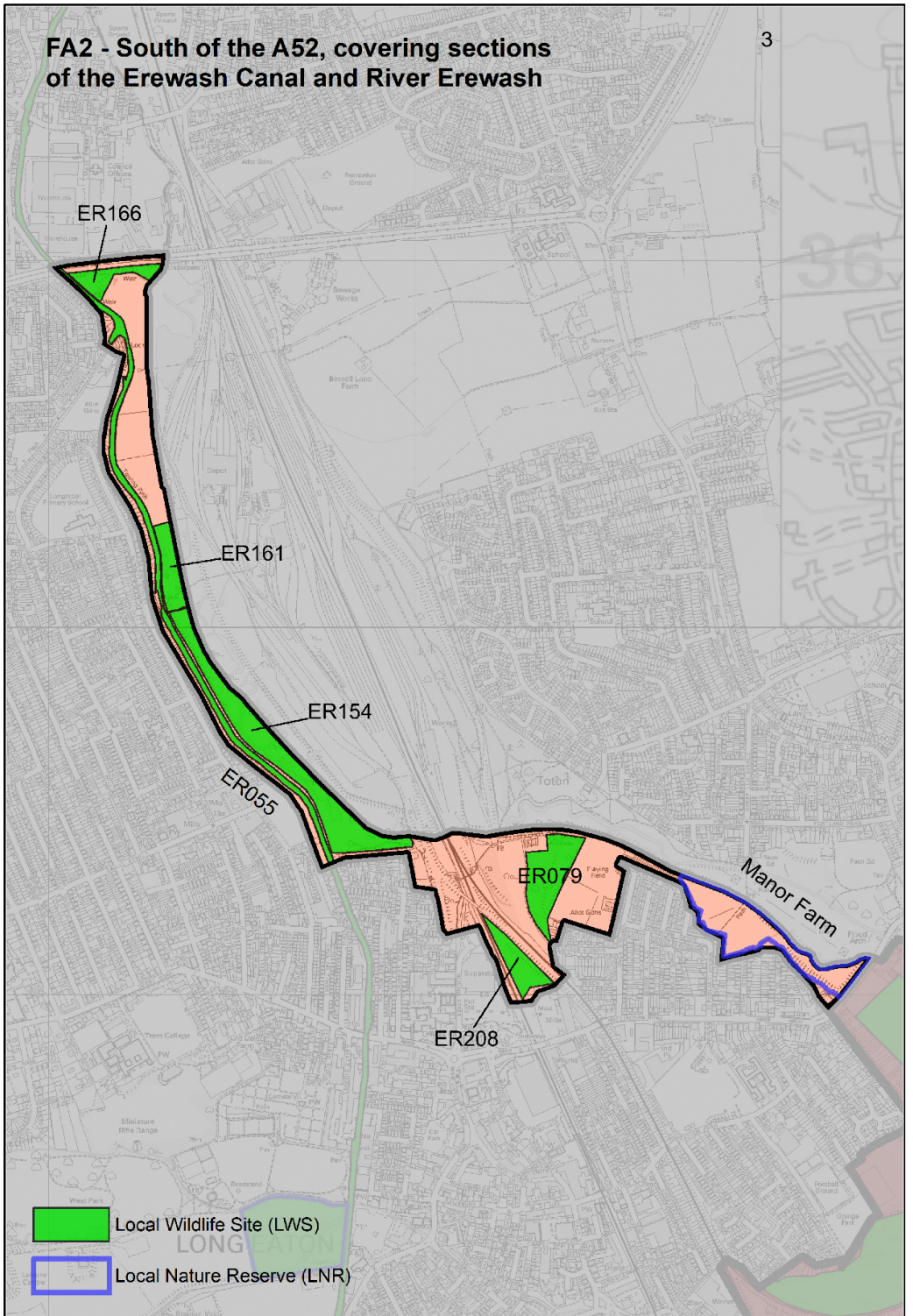


- FA1 - South east of Long Eaton, covering sections of the River Trent
- FA2 - South of the A52, covering sections of the Erewash Canal and River Erewash
- FA3 - Northern fringe of Sandiacre, bound by the M1
- FA4 - Quarry Hill and Stanton Industrial Area
- FA5 - North East of West Hallam
- FA6 - North West of Kirk Hallam
- FA7 - Morleyhayes Wood, Little Wood/ West of Stanley Common
- FA8 - North of Little Eaton
- FA9 - South of Breadsall/ Great Northern Greenway Corridor
- FA10 - East of A38 (Little Eaton)
- FA11 - Grounds surrounding and encompassing Locko Park (Stanley and Ockbrook)
- FA12 - North of Ockbrook, encompassing Dale Abbey and the western fringe of Kirk Hallam
- FA13 - North west of Risley, encompassing Hopwell Farm
- FA14 - West of Sawley / South of Breaston
- FA15 - East of Cotmanhay, between the Erewash Canal and the Nottingham Canal
- FA16 - South of Borrowwash, boarded by the River Derwent
- FA17 - Dale Road area, encompassing Erewash Valley Golf Club
- Sub Regional Network
- Greater Nottingham Wide Strategic Network

FA1 - South east of Long Eaton, covering sections of the River Trent



FA2 - South of the A52, covering sections of the Erewash Canal and River Erewash



FA3 - Northern fringe of Sandiacre, bound by the M1

Stanton Gate, Stanton-by-Dale

ER204


ER215

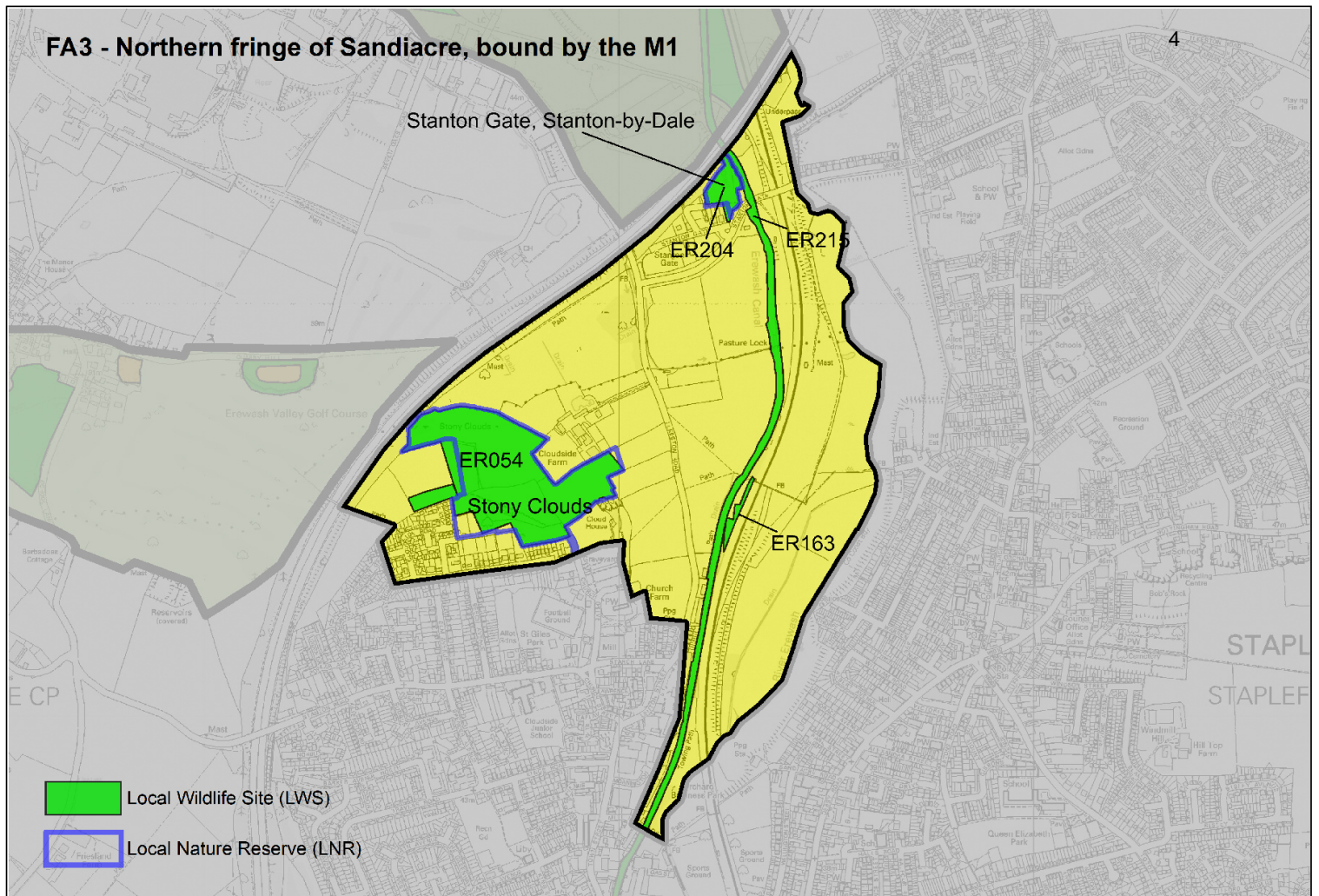
ER054

Stony Clouds

ER163

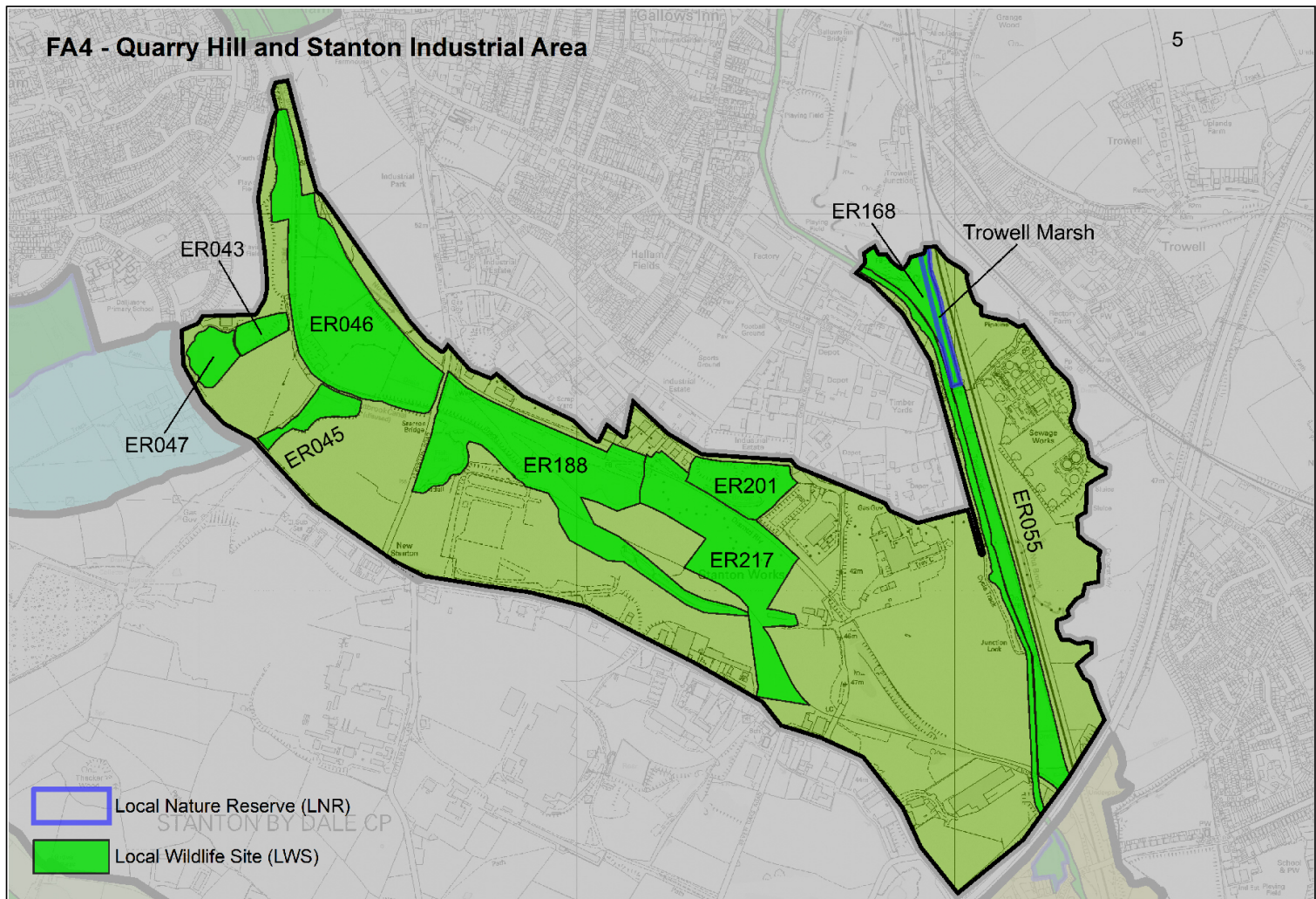
 Local Wildlife Site (LWS)

 Local Nature Reserve (LNR)



FA4 - Quarry Hill and Stanton Industrial Area

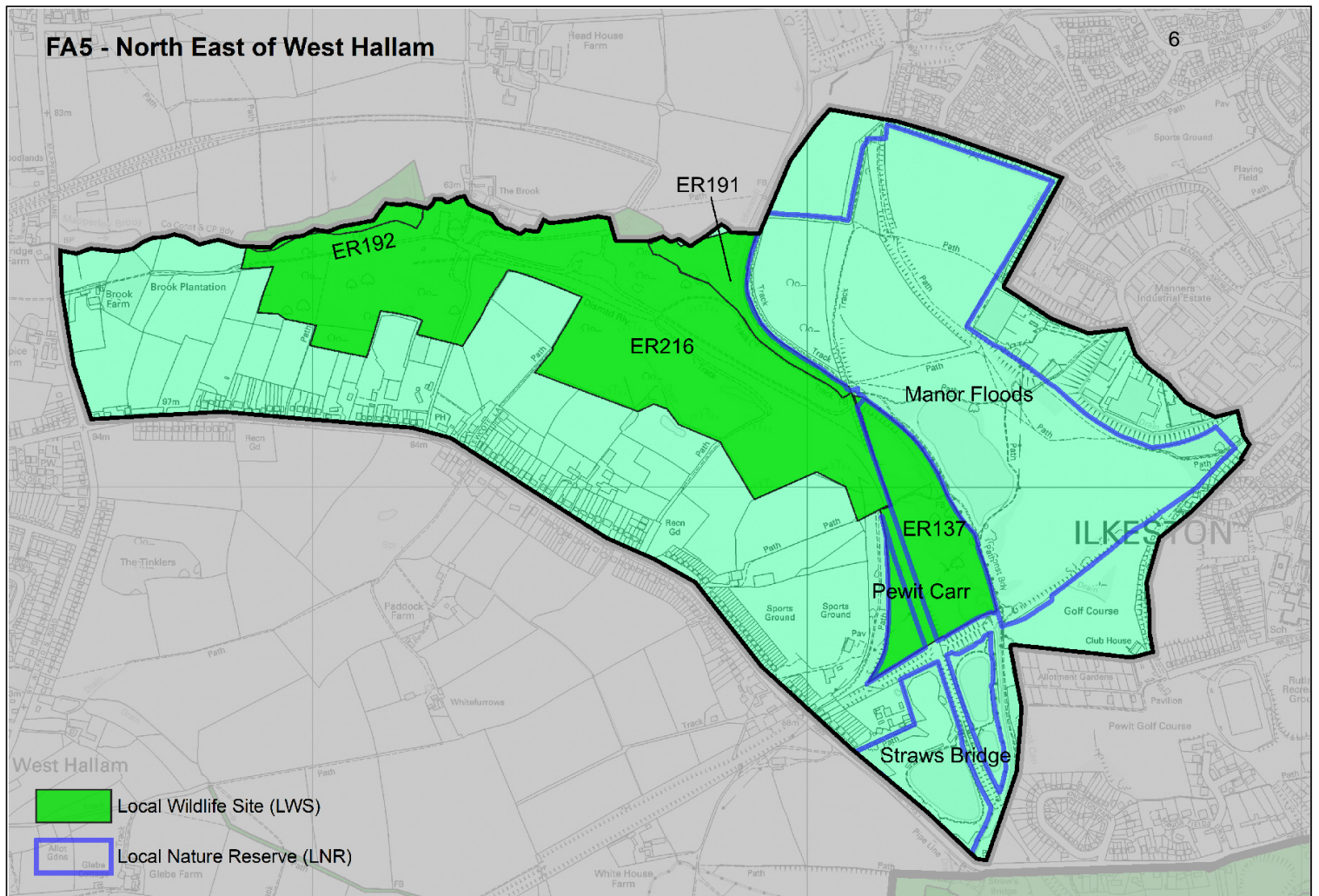
5



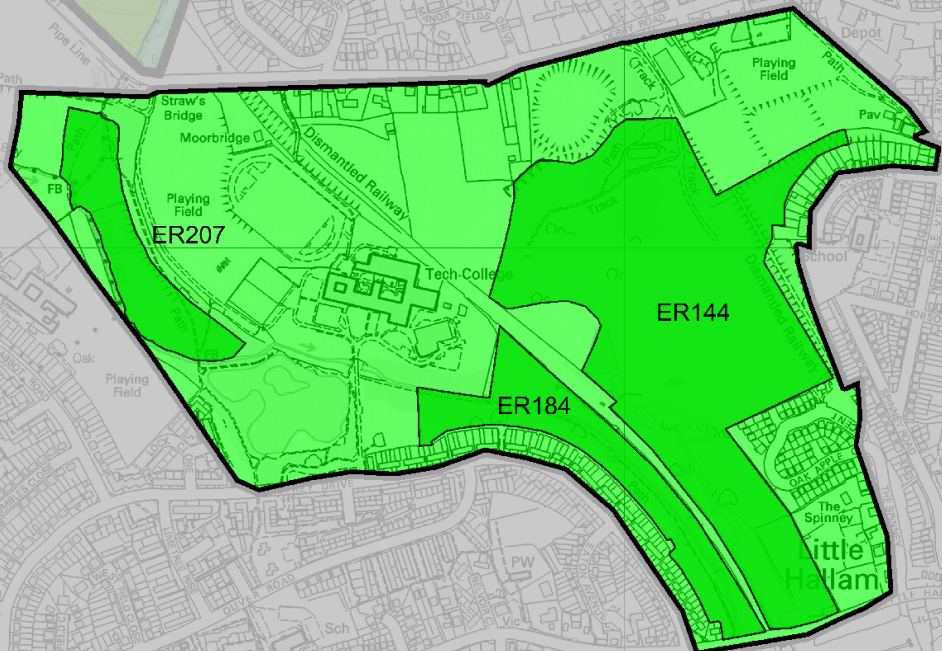
-  Local Nature Reserve (LNR)
-  Local Wildlife Site (LWS)

FA5 - North East of West Hallam

6

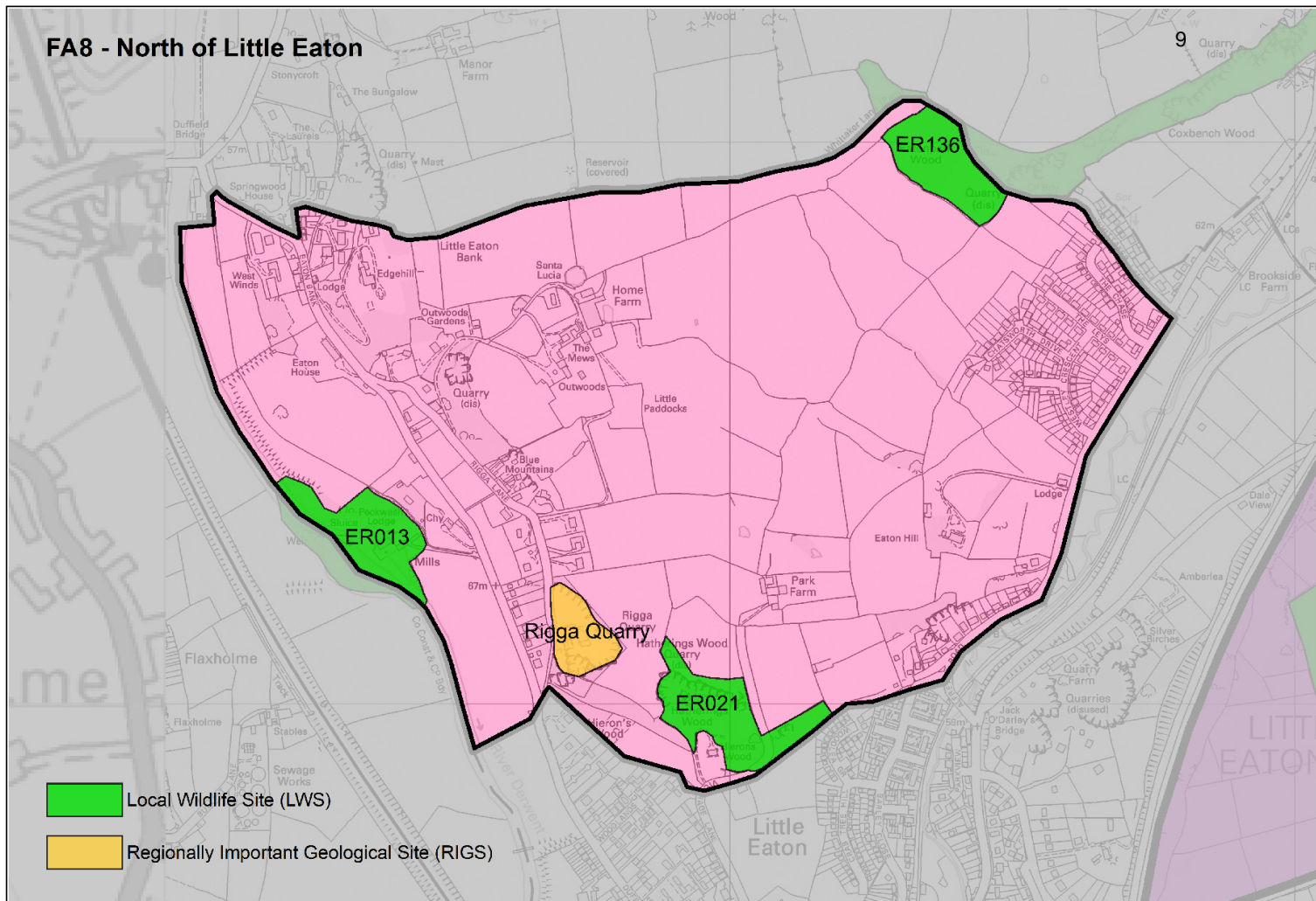


FA6 - North West of Kirk Hallam

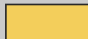


 Local Wildlife Site (LWS)

FA8 - North of Little Eaton



 Local Wildlife Site (LWS)

 Regionally Important Geological Site (RIGS)